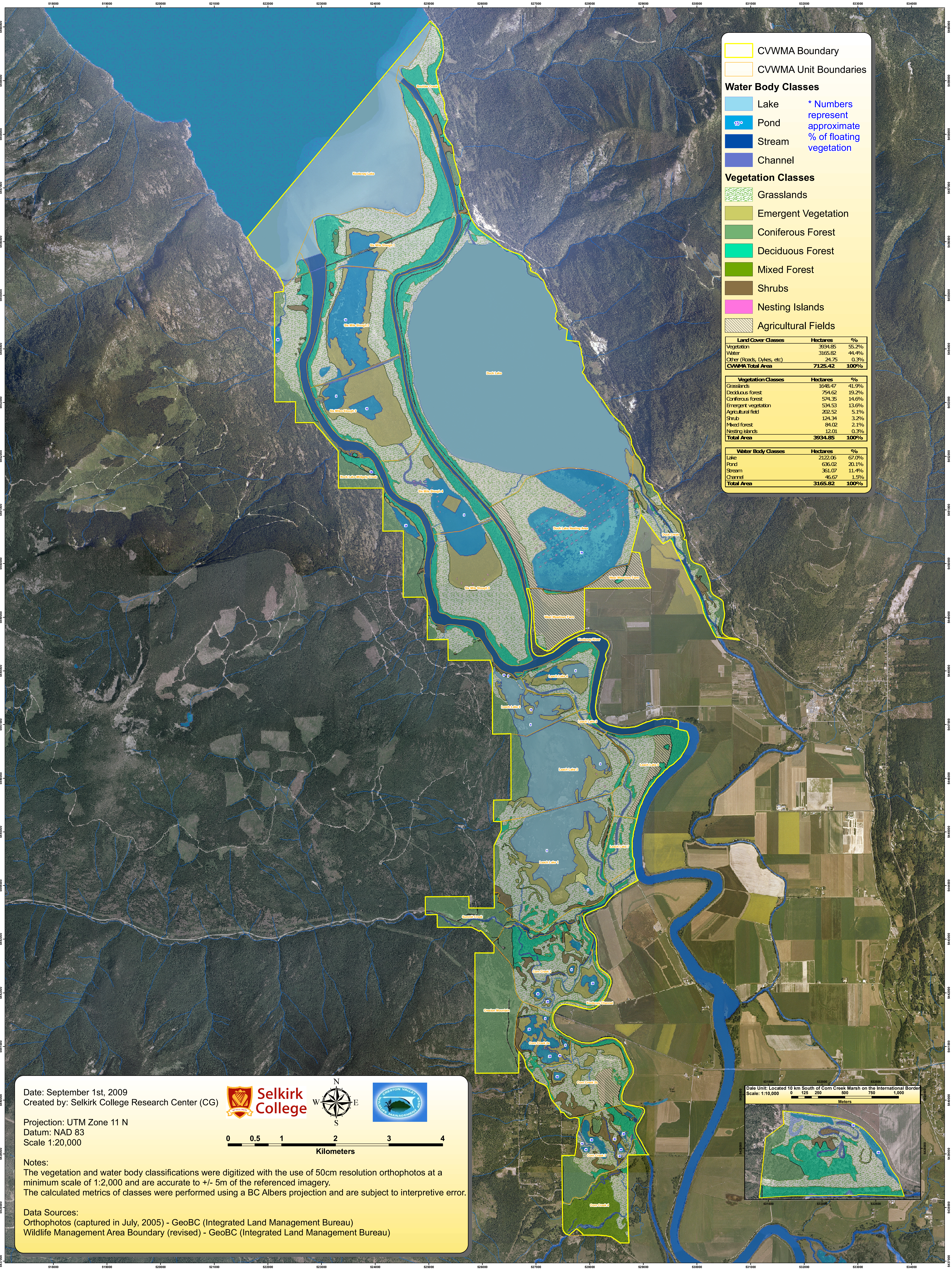


Creston Valley Wildlife Management Area Land Cover



CVWMA Boundary
CVWMA Unit Boundaries

Water Body Classes

- Lake
- Pond
- Stream
- Channel

* Numbers represent approximate % of floating vegetation

Vegetation Classes

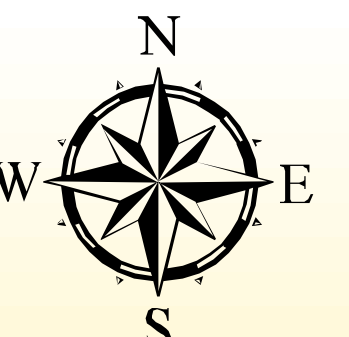
- Grasslands
- Emergent Vegetation
- Coniferous Forest
- Deciduous Forest
- Mixed Forest
- Shrubs
- Nesting Islands
- Agricultural Fields

Land Cover Classes	Hectares	%
Vegetation	3934.85	55.2%
Water	3165.82	44.4%
Other (Roads, Dikes, etc)	24.75	0.3%
CVWMA Total Area	7125.42	100%

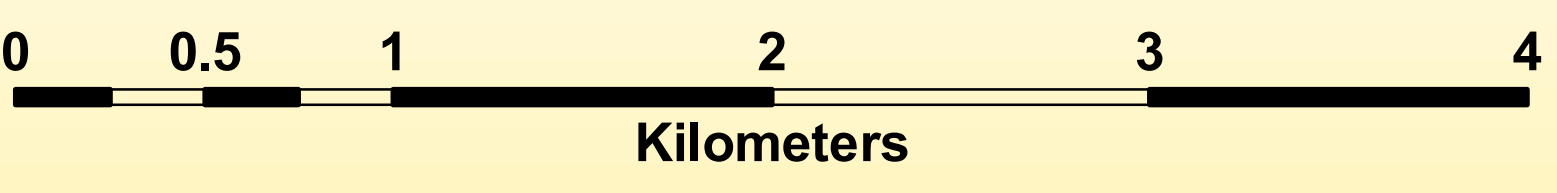
Vegetation Classes	Hectares	%
Grasslands	1648.47	41.9%
Deciduous forest	754.62	19.2%
Coniferous forest	574.35	14.6%
Emergent vegetation	534.53	13.6%
Agricultural field	202.52	5.1%
Shrub	124.34	3.2%
Mixed forest	84.02	2.1%
Nesting islands	12.01	0.3%
Total Area	3934.85	100%

Water Body Classes	Hectares	%
Lake	2122.06	67.0%
Pond	636.02	20.1%
Stream	361.07	11.4%
Channel	46.67	1.5%
Total Area	3165.82	100%

Date: September 1st, 2009
 Created by: Selkirk College Research Center (CG)



Projection: UTM Zone 11 N
 Datum: NAD 83
 Scale 1:20,000



Notes:
 The vegetation and water body classifications were digitized with the use of 50cm resolution orthophotos at a minimum scale of 1:2,000 and are accurate to +/- 5m of the referenced imagery.
 The calculated metrics of classes were performed using a BC Albers projection and are subject to interpretive error.

Data Sources:
 Orthophotos (captured in July, 2005) - GeoBC (Integrated Land Management Bureau)
 Wildlife Management Area Boundary (revised) - GeoBC (Integrated Land Management Bureau)

Date Unit: Located 10 km South of Corn Creek Marsh on the International Border
 Scale: 1:10,000

